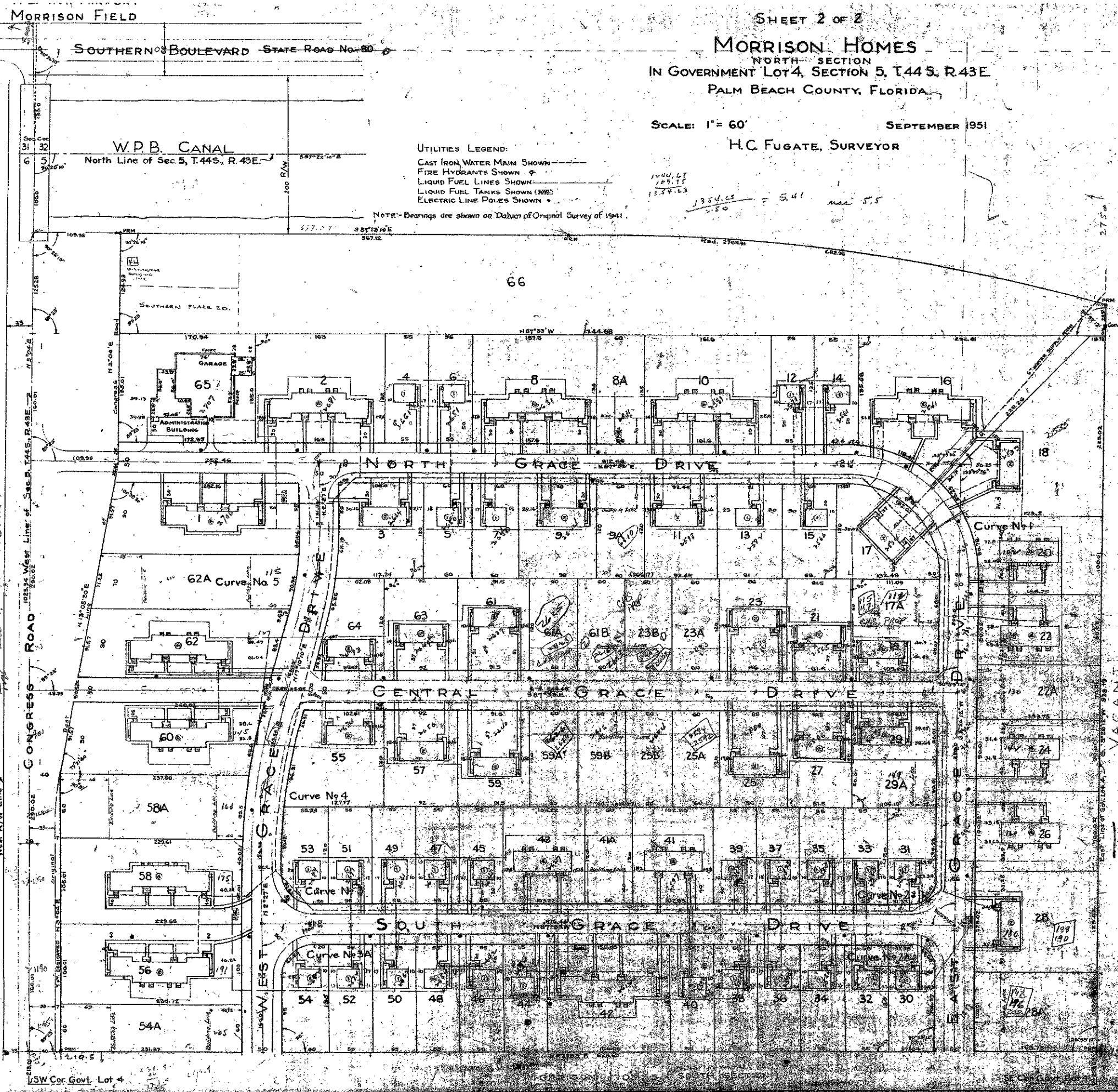


23-190



SHEET 2 OF 2
MORRISON HOMES
 NORTH SECTION
 IN GOVERNMENT LOT 4, SECTION 5, T.44 S., R.43 E.
 PALM BEACH COUNTY, FLORIDA

SCALE: 1" = 60'
 H.C. FUGATE, SURVEYOR
 SEPTEMBER 1951

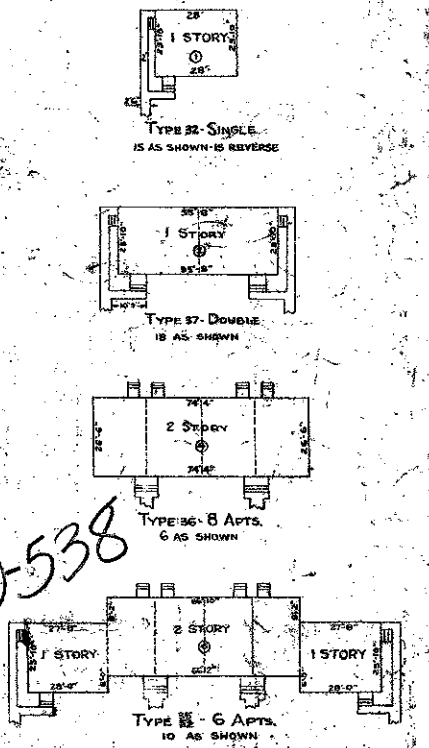
UTILITIES LEGEND:
 CAST IRON WATER MAIN SHOWN ---
 FIRE HYDRANTS SHOWN ⊕
 LIQUID FUEL LINES SHOWN -
 LIQUID FUEL TANKS SHOWN (T)
 ELECTRIC LINE POLES SHOWN *

NOTE: Bearings are shown on Datum of Original Survey of 1941.

190

CURVE NO.	RADIUS	DELTA ANGLE	TANGENT DISTANCE	ASC. DISTANCE
1	140.0	90° 59' 12"	142.43	222.32
2	55.0	89° 0' 48"	54.06	85.45
2A	53.14	90° 59' 12"	54.06	84.20
3	65.0	90° 0' 0"	65.0	102.10
3A	65.0	90° 0' 0"	65.0	102.10
4	712.0	14° 43' 10"	91.96	182.91
5	475.0	14° 43' 10"	61.35	122.03

DIMENSIONS OF BUILDINGS
 ⊕ INDICATES NUMBER OF APARTMENTS



1000-538

PUBLIC HOUSING ADMINISTRATION
 FIELD OFFICE FOR MANAGEMENT AND DISPOSITION
 GLENN BUILDING, ATLANTA 3, GEORGIA

SHEET 2 OF 2
 P.E.A. 8041

MORRISON HOMES
 NORTH SECTION
 IN GOVT. LOT 4, SEC. 5, T.44 S., R.43 E.
 PALM BEACH COUNTY, FLORIDA

(23-190) **16**

SCALE: 1" = 60' SEP 1951

H.C. FUGATE
 REGISTERED ENGINEER & SURVEYOR
 WEST PALM BEACH, FLORIDA